

## NCP500 Express New Business Editions

### KX-NCP500X

- Digital solution designed for 4-12 users
- Equipped as standard with 4 digital Phone Ports (Expandable to 12)
- Equipped with 4 Single Line Ports for fax or analogue telephones
- Expandable for digital and IP telephones
- Equipped with 2 ports Basic Rate Card
- Communication Assistant Basic Express as standard for all Users

### KX-NCP500V

- VoIP solution equipped for 8 IP users
- Equipped as standard with 4 digital Phone Ports (Expandable to 12)
- Equipped with 4 Single Line Ports for fax or analogue telephones
- Equipped with 4 port compression card (DSP4)
- Equipped with 4 SIP Trunk ports
- Communication Assistant Basic Express as standard for all Users



**KX-NCP500X**

**Includes  
 Brackets for  
 Rack and Wall  
 Mount Options**



**KX-NCP500V**

CO/Ext. Type		KX-NCP500X	KX-NCP500V
<b>Extension</b>	<b>Total Number of Extensions DPT + IP. (Standard Configuration)</b>	<b>144 (8)</b>	<b>144 (8)</b>
	IP-Proprietary Telephone on System MPR Card	128	128
	SIP Telephones on MPR	128	128
	Total Single Line Telephones (SLT)	4	4
	Digital Proprietary Telephones (DPT) with (Standard Configuration)	12 (4)	12 (4)
	DPT and SLT (Standard Configuration)	16 (8)	16 (8)
<b>Trunks</b>	<b>Total Number of Trunks</b>	<b>128</b>	<b>128</b>
	Total SIP Trunks - MPR	64 (4)	64 (4)
	Total H.323 Trunks - MPR	32	32
	PSTN Analogue Trunks	12	12
	ISDN - BRI Channels (Standard Configuration)	12 (4 BRI)	12 (4 BRI)
	ISDN - PRI30 Channels (PRI Ports)	60 (2 PRI)	60 (2 PRI)
	PSTN and ISDN (2 x PRI + LCOT4)	64	64
<b>PS</b>	DECT Wireless Handsets	64	64
<b>CS</b>	DECT Cell Station (DPT I/F)	7	7
	High Density DECT Cell Station	3	3
	IP DECT Cell Station	16	16

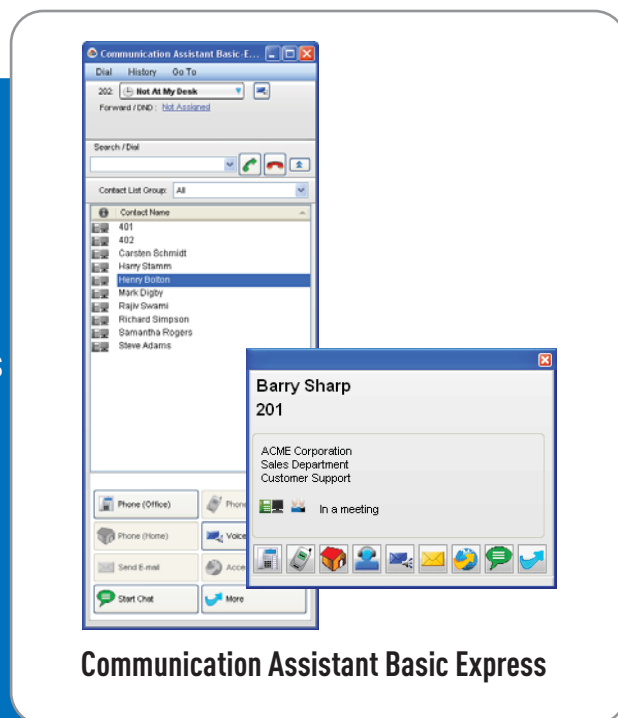
## Unified Communications

### Communication Assistant Basic Express

- Enhance user productivity and collaboration
- Simple point and click telephony
- Included as standard for all users
- Expand with CA Pro, CA Supervisor & CA Console as your business grows
- Integrates with Microsoft Outlook application
- Anytime anywhere access to business communications
- Centralised CA supporting up to 8 sites
- View Contacts across multiple locations
- Drag and Drop local and remote contacts to create Multiple
- Favourite Contact Lists using 'MyList'
- Simply 'Drag and Drop' contacts into Multi Party Conferencing (requires OneNet)

### Business Benefits

- Easy to use solution for daily basic telephony features
- Quickly see who is calling, and link your contacts to reference files
- Easily text chat to busy colleagues no matter what their availability
- Access and control voicemail messages when working at any connected location
- Control call forwarding settings easily
- Get reminder of all missed calls
- IP Camera and door phone integration
- Easily manage contacts across multiple sites
- Simple conferencing facilities without the need for external equipment



**Communication Assistant Basic Express**

Technical Specification	CA Basic Express
Integration with Microsoft Office	YES
Call History	10
Contacts	10
Dial from Application	YES
Instant Message (chat)	YES
Conferencing (requires OneNet)	YES